

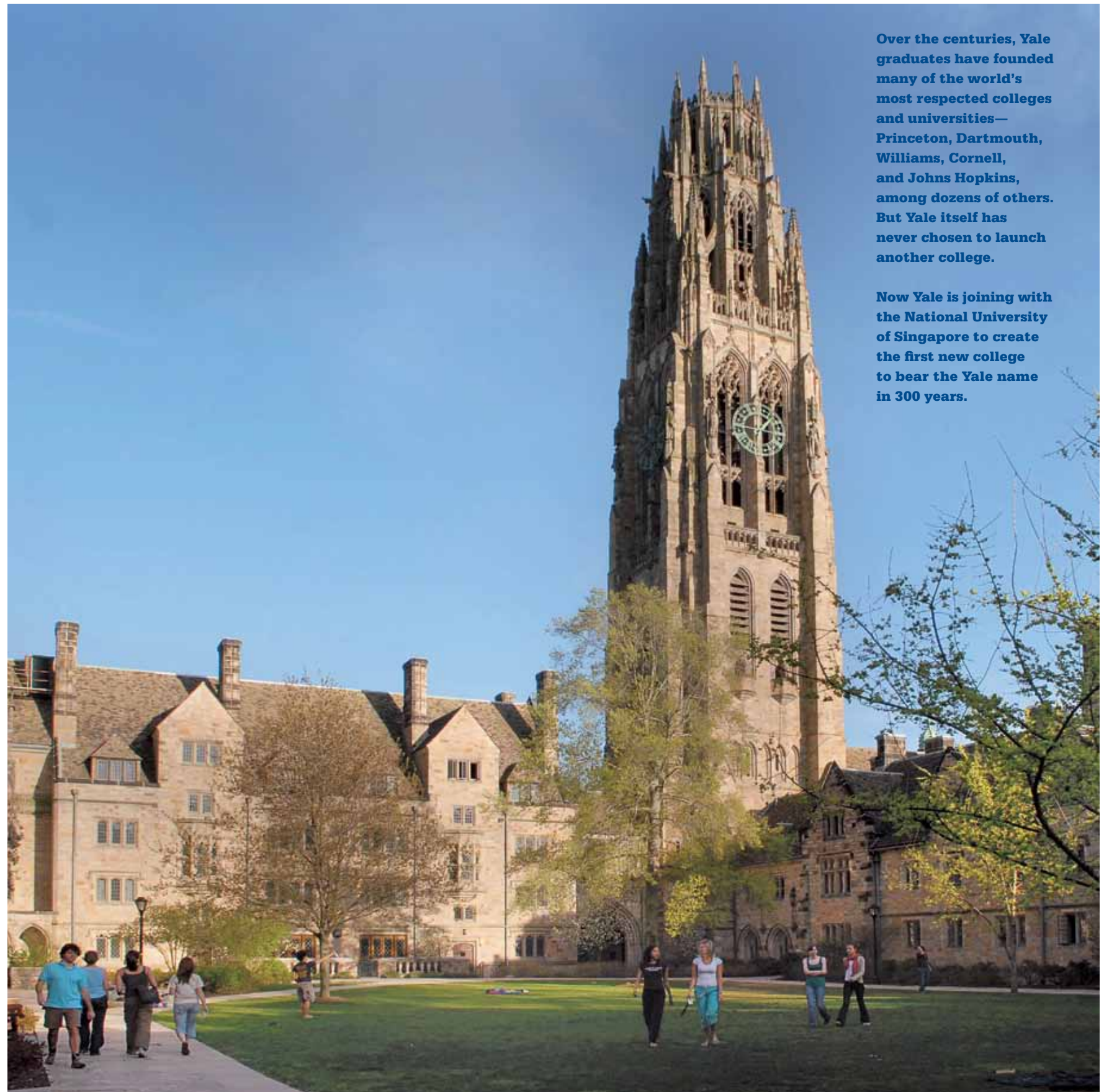
**Yale**  
**NUS**  
**College**

## An Invitation to Apply

Yale-NUS is seeking more than high-achieving students from around the world. We are looking for daring students who want to be part of a groundbreaking new college—students who will make the most of their talents and this extraordinary opportunity.

When you choose Yale-NUS, it is important to understand that you are choosing, in a very real sense, to change your life.

Your horizons will be widened, your range of competencies extended, and your opportunities multiplied.



Over the centuries, Yale graduates have founded many of the world's most respected colleges and universities—Princeton, Dartmouth, Williams, Cornell, and Johns Hopkins, among dozens of others. But Yale itself has never chosen to launch another college.

Now Yale is joining with the National University of Singapore to create the first new college to bear the Yale name in 300 years.



As one of the first Yale-NUS students, you will start your education on the Yale campus in the United States.

Pioneering students entering Yale-NUS in 2013 will spend several weeks during the summer at Yale. You and your Yale-NUS classmates and professors will take over one of Yale's beloved Residential Colleges. While there, you will

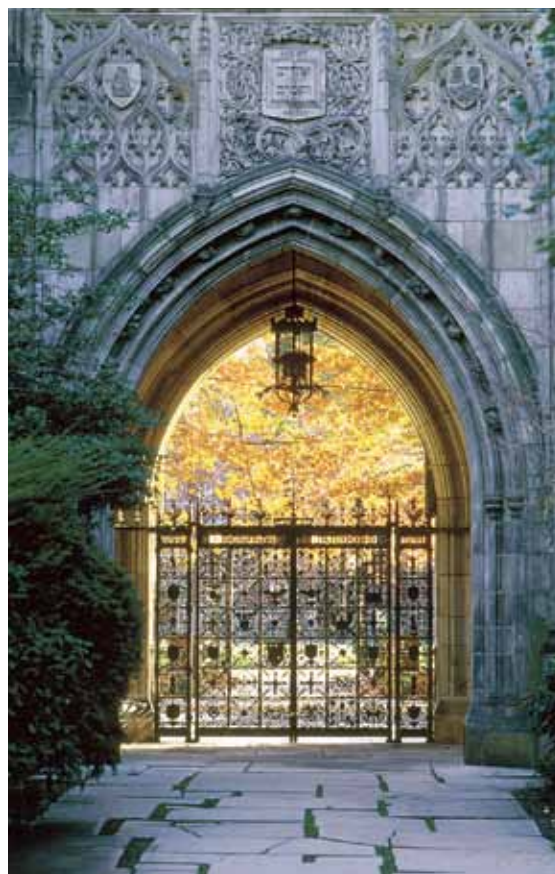
have a preview of all the major elements of the education that awaits you at Yale-NUS. Your experience in the United States will also include study trips to New York City and Boston.



Next, you go to NUS and Singapore—to the heart of the most dynamic region in the world.

There, you will engage in a new curriculum designed by Yale and NUS faculty. You will have the advantage of an education that is profoundly global. You will gain a deep understanding of Asia through one-of-a-kind opportunities made

possible by our location and NUS' expertise. You will experience a new educational model based on the great tradition of Yale's Residential Colleges.





# = 3

Far more than  
the sum of its parts —  
Yale-NUS offers  
you a unique and  
powerful education.

**A degree that  
surpasses any single  
discipline**

You will gain deep knowledge of one discipline through your major, but you will also get a broad grounding in subjects that are key to understanding our world and making a difference in whatever career you choose. A Yale-NUS education integrates the sciences, humanities, social sciences, and your major. It is designed to prepare students to flourish quickly in virtually any field.



**A faculty of  
the world's  
brightest minds**

Yale-NUS students will study in small groups with leading faculty, who prize teaching and mentoring students.

**A global  
student body**

Yale-NUS students will come from Singapore and from around the world.

**A new, state-of-  
the-art campus**

Designed by world-famous architect Cesar Pelli of New Haven in the United States and Forum Architects of Singapore, the new campus is located adjacent to the main NUS campus.

**Yale-style  
Residential  
Colleges**

Yale-NUS offers an immersive 24/7 living and learning undergraduate experience that is unlike any other in Asia.

**Real leadership  
experience now**

The first Yale-NUS students will help to create the College's initial traditions, clubs, and activities. They will be the pioneers who set the groundwork for generations to come.

**Guaranteed  
internships**

Every student will have an internship in Singapore or abroad. Leading multinational companies such as American Express, Chanel, Google, and Singapore Airlines and NGOs such as the Tony Blair Faith Foundation and the World Wildlife Fund are partnering with Yale-NUS to offer top internships. (See pages 9 and 11 for a list.)

**Lifelong  
membership in  
global alumni  
networks**

Yale-NUS students will become part of both the Yale and the NUS alumni societies.

**Extraordinary  
value**

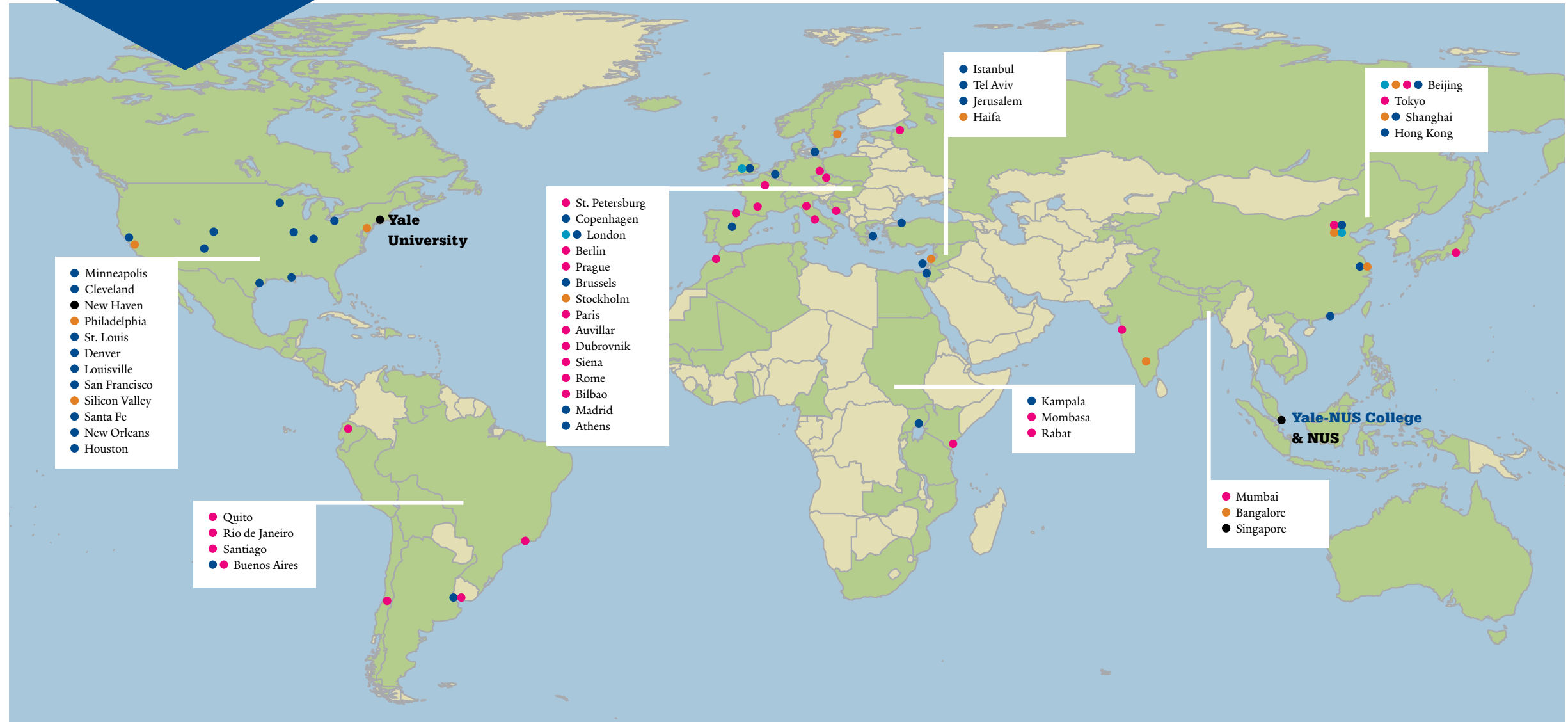
Yale-NUS will give the most talented students access to a remarkable, affordable education, global study, and internships — an exceptional value compared to leading colleges abroad.

# The World Will Be Your Campus.

Every student is guaranteed an opportunity to study abroad or to have an overseas internship.

Participate in one of 40 global programs exclusive to Yale and Yale-NUS students. Study at Yale in the United States or at one of the NUS Overseas

Colleges in entrepreneurial hubs like Silicon Valley. Choose from programs in more than 80 countries shown in green below.



Opportunities to study at Yale in the summer or during the semester

Yale Semester Abroad Programs in London and Beijing

22 Cities around the world with Internship Clusters created by Yale and Yale alumni

18 Summer Yale Programs around the world

NUS Overseas Colleges programs that include internships with start-up companies around the world

Plus NUS semester abroad programs in scores of countries including Australia, Austria, Brazil, China, Croatia, Finland, France, Germany, India, Ireland,

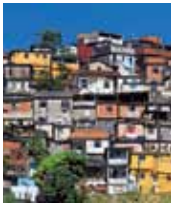
Latvia, Mexico, Norway, Romania, South Africa, Sweden, the United Kingdom, and many more on nearly every continent



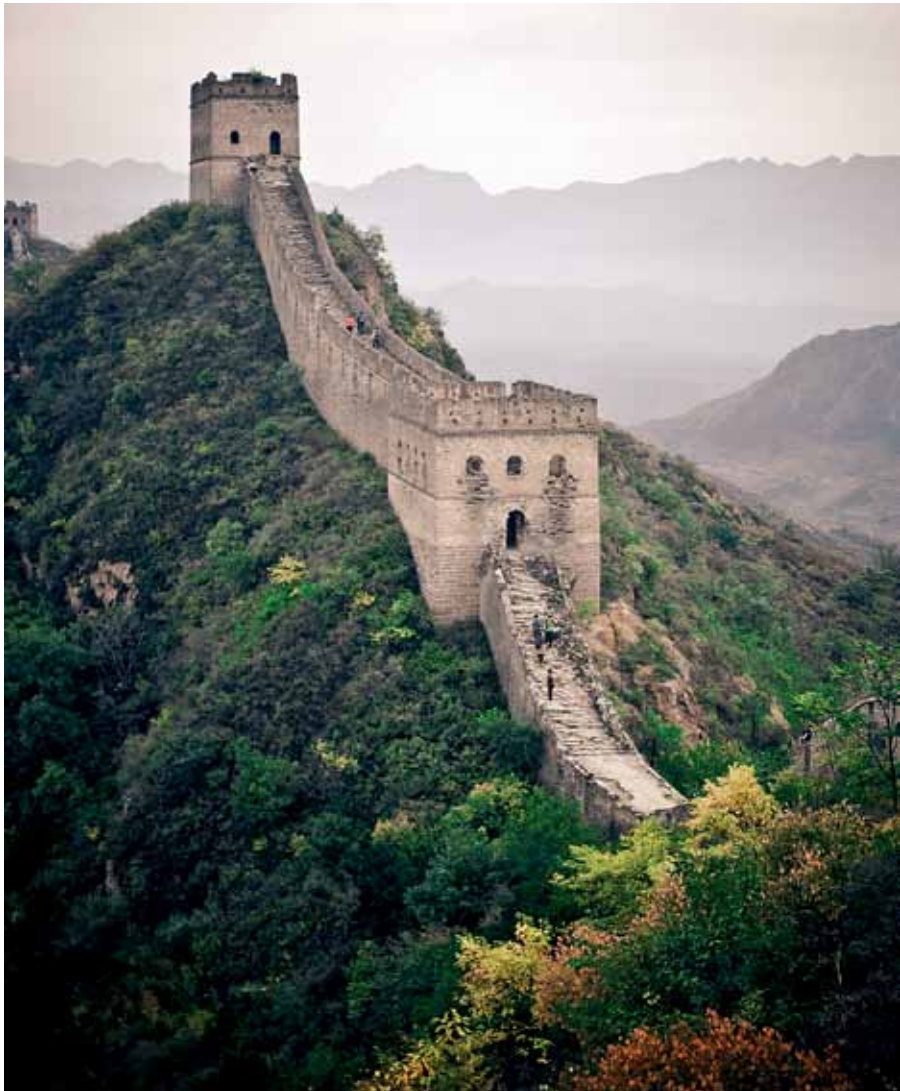
Here are some of the experiences that have only been open to Yale and NUS students but will now be open to you.



**Conduct research on the Amazonian rain forest in South America or Chinese opera in Shanghai.**



**Intern for Google in Silicon Valley, California, for Intel in Beijing, or for a law firm run by Yale graduates in London.**



**Study history in Mombasa, literature in Paris, or cognitive science on the Yale campus in the United States.**



**Spend your summers or a semester studying film in Prague, Gothic architecture in England, or astrophysics in Santiago.**



**Yale-NUS has a growing roster of overseas internships with leading multinational companies and organizations.**

- American Express (New York)
- American Museum of Natural History (New York)
- Center for Creative Leadership (Greensboro)
- Chanel (New York)
- ClimateWorks (San Francisco)
- The Coca-Cola Company (Atlanta)
- Federal Express (Memphis)
- GE (Fairfield)
- Google (Mountain View)
- Hewlett Foundation (Palo Alto)
- Hillhouse Capital Management, Ltd (Beijing)
- Lazard (New York)
- Mercy Corps (Portland and field site)
- Microsoft (Redmond)
- Milbank, Tweed, Hadley & McCloy LLP (United States, Europe, Brazil and Asia)
- New York Botanical Garden
- Orient-Express Hotels Ltd (Europe)
- PepsiCo (United States)
- Santander Bank (Europe and Latin America)
- Sino-Land Company Limited (Hong Kong)
- Time Warner Inc (New York)
- Tony Blair Faith Foundation (London)
- Total Oil Asia Pacific (Europe, Asia, Africa or Middle East)
- United Nations (New York)
- World Wildlife Fund (Washington, DC)
- Yale University Press (London)



*“If you were smart in 1807 you moved to London, if you were smart in 1907 you moved to New York City, and if you are smart in 2007 you move to Asia.”*

**Jim Rogers** Yale University '64; American investor, author, economic commentator. In 2007 he moved his family from New York City to Singapore.



Singapore will be the jumping-off point for your exploration of all of Asia and the world.

Singapore — a global center of business and entrepreneurship, a cross-roads of diverse cultures, one of the safest cities in the world, with a growing arts scene and a devotion to excellence that is just as celebrated as its food. As Asia’s prominence grows, there is no question that Yale-NUS is based in one of the most dynamic cities in the world.

Even if you are from Singapore, as a Yale-NUS

student you will experience your city in a whole new way, living on the Yale-NUS campus with students from countries throughout Asia, as well as the rest of the world. You will also have access to world leaders who come to Singapore to speak at Yale-NUS, and you will have connections to professional networks, internships, and job opportunities.

Your Gateway to the Globe, Singapore.



*“Asia is home to two of the largest and fastest growing economies in the world. Understanding rapid changes in the world around them in the context of Asia’s extraordinary history, culture, and environment of discovery, will prepare Yale-NUS students to be global citizens for the next century.”*

**Lai Choy Heng**  
Executive Vice-President (Academic Affairs), Professor of Physics,  
Yale-NUS College

**Singapore-based companies and organizations guaranteeing internships for Yale-NUS students**

- Ascendas Pte Ltd
- Development Bank of Singapore Asset Management
- Economic Development Board
- Fraser's Hospitality Pte Ltd
- Housing & Development Board
- International Enterprise Singapore
- Keppel Corporation
- KPMG
- Microsoft
- National Arts Council
- National Environment Agency
- National Heritage Board
- Public Service Division
- Singapore Airlines
- Singapore Science Centre
- Singapore Exchange Limited
- Singapore International Foundation
- Singapore Press Holdings Ltd
- Singapore Tourism Board
- SingTel Group
- Total Oil Asia Pacific
- Urban Redevelopment Authority



Yale-NUS has adopted one of Yale's most distinctive features: the Residential College System.



### Three Residential Colleges

In addition to being a student of Yale-NUS, you will be a member of one of three Residential Colleges. There you will have the kind of community Yale has fostered for almost a century – and which it adapted from Oxford and Cambridge: residential neighborhoods. Each has its own character, its own dining hall, common room, student café, classrooms, and student activity spaces.

### Rector and Vice Rector

Each Residential College will have two key faculty members to guide the life of the College. Among other activities, the Rector works with students to invite world leaders and other visitors to meet with students. The Vice Rector is the academic mentor for each student in the College.

### Yale-NUS Neighbor—UTown

Living on the Yale-NUS campus, your “neighborhood” will be adjacent to the brand new NUS University Town (UTown). At the heart of UTown is the Education Resource Centre, with facilities such as a learning café, technology-rich seminar rooms, and a multimedia hub. It also includes its own EduSports Complex. Designed as a green community, UTown has beautiful vistas and an array of shops and restaurants – all of which are available to you.

Your Home Base is Yale-NUS.



As one of the pioneering Yale-NUS students, you will take a major leadership role in shaping the culture and traditions of your Residential College and Yale-NUS. Consider that decades ago, students at Yale founded the first college newspaper in the United States, the first a cappella singing group,

the first student political club, and so many other traditions that are a treasured part of life at Yale today. Yale-NUS students have the opportunity to be the inventors and founders of traditions that can influence Yale-NUS centuries from now.





# 4

## Your four years at Yale-NUS will transform your life.

The “half-life” of knowledge in many fields is changing so quickly that mastery of a single body of knowledge is inadequate for those who will be tomorrow’s leaders. The solution: Become highly skilled at crossing boundaries. Quickly

adapt to new environments. Form meaningful collaborations and partnerships. Be prepared to master new challenges throughout your life. A Yale-NUS education will teach you how.



**What makes teaching and learning different here:**

**Small, discussion-based classes, most with fewer than 18 students**

**Top faculty committed to teaching**

**A common interdisciplinary curriculum**

**High-level research opportunities**

**Global experience guaranteed**

### Sample student experience at Yale-NUS

	Semester One	Semester Two
<b>Year One</b>	Literature & the Humanities 1 Philosophy & Political Thought 1 Scientific Inquiry Comparative Institutions & Modes of Social Analysis	Literature & the Humanities 2 Philosophy & Political Thought 2 Foundations of Science <i>or</i> Integrated Science <i>Elective or Integrated Science</i>
<b>Year Two</b>	Modern Social Thought (either semester) Foundations of Science <i>or</i> Integrated Science <i>Elective or Integrated Science</i> Elective	Quantitative Reasoning (either semester) Elective Elective Elective
<b>Year Three</b>	Historical Immersion (any time in year 3 or 4) Major Major Elective	Current Issues (any time in year 3 or 4) Major Major Elective
<b>Year Four</b>	Capstone project in major Major Major Elective	Capstone project in major Major Major Elective



### A Message from President Pericles Lewis

*“I am honored to be appointed the first President of Yale-NUS College. My colleagues and I are eager to offer the best undergraduate education in Asia, comparable to what you would receive at an Ivy League institution in the U.S., but with the advantage of being located in Singapore and with a curriculum and a residential environment updated for the 21st century.”*

A graduate of McGill and Stanford Universities, President Lewis’s academic work connects literature with its social and intellectual context.



*“Yale-NUS offers the kind of collegiate experience that I wish I had when I was a college student at a large private university in South Korea. I still have many friends with children about to enter college, and I am excited to tell them about Yale-NUS.”*

**Yale Professor Marvin M. Chun**

Psychology, Cognitive Science, and Neurobiology;  
Rector of Yale-NUS College, Summer 2013

All students will take the Common Curriculum—a set of courses that will introduce you to multiple modes of inquiry, to some of the timeless ideas of human existence, and to many challenging issues of our age.

You will have intensive exposure to the humanities, social sciences, and sciences. Each year, students will also have several options for electives in all disciplines, including the opportunity to choose from many courses at NUS.

The breadth of knowledge, critical thinking skills, and analytic abilities you gain through the Common Curriculum will prepare you to go even deeper into the study of your major.

# Breadth

# Depth

By your third year, you will choose a major from more than a dozen options.

You may also choose one minor from the same list and explore an alternative field of study.

You will have a chance to design an individual capstone project—a project that can build on your independent research or your global study experiences.

## **Majors**

**Anthropology**

**Arts and Humanities**

**Economics**

**Environmental  
Studies**

**Global Affairs**

**History**

**Life Sciences**

**Literature**

**Mathematical and  
Computational  
Sciences**

**Philosophy**

**Philosophy, Politics,  
and Economics**

**Physical Sciences**

**Psychology**

**Urban Studies**



Intellectual exploration with your peers is the goal. In small seminars, you will learn to question relentlessly, to think broadly, to analyze problems carefully, to evaluate consequences—in other words, to develop the skills and habits of mind needed by leaders today.



### Three Components of a Well-Rounded Education

38%

common curriculum  
12 courses

31%

major  
10 courses

31%

electives & prerequisites for major  
10 courses

### Common Curriculum

#### Great Works

4 Semester Courses:  
*Philosophy & Political Thought*  
*and Literature & the Humanities*

Imagine a debate between Confucius and Aristotle. They both believed in living a virtuous life, but their ideas of what counted as virtue differed—they placed different emphases on the duties we owe to friends, to community, and to ourselves.

In your Philosophy & Political Thought courses, you will explore writings by ancient



philosophers—the Roman Cicero, the Chinese Sun Tzu, and St. Augustine of Hippo. What do the attitudes of these different thinkers tell us about modern international politics?

In Literature & the Humanities, you will dive into the origins of epics such as the *Odyssey*,



the *Iliad*, the *Mahabharata*, and the *Ramayana*. Classes will see performances by modern South-east Asian storytellers who use

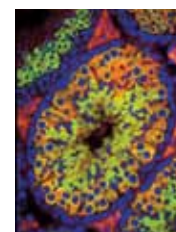


some of the ancient narrative techniques. You will also explore the ways modern theater has been influenced by religious rituals, Shakespeare, Molière, Japanese Noh drama, Chinese opera, and Southeast Asian puppet theater.

### Natural Sciences

3 Semester Courses:  
*Scientific Inquiry; and Foundations of Science or Integrated Science*

In 1900 a famous physicist purportedly proclaimed “there is nothing new to be discovered... all that remains is more and more precise measurement.” Within just a few years, relativity theory and quantum mechanics provided the first of the scientific revolutions that rocked the 20th century. What mind-bending discoveries await

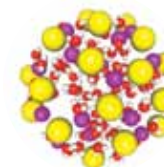


us in the 21st century? Will string theory really prove to be the “theory of everything”? Will fields like human consciousness and climate change become exact sciences? Will genetics provide cures for disease, or lead to unethical manipulation of the human genome?



All students begin with Scientific Inquiry, followed by either Foundations of Science or one of the Integrated Science tracks for students who plan to major in science.

Whether you have a scientific background or not, the Yale-NUS Common Curriculum will prepare you to understand, participate in, and critically evaluate the dramatic advances that 21st-century science is sure to make.



### Individuals & Society

3 Semester Courses:  
*Comparative Institutions & Modes of Social Analysis; Modern Social Thought; and Quantitative Reasoning*

What is the relationship of the individual to society? How is this relationship shaped by family, ethnic group, nation-state, and global economy? Drawing on psychology, sociology, geography, anthropology, political science, and economics, you will study



major institutions of society, government, and the economy. These courses will train you to think critically and in an informed manner about the way these institutions shape the lives of individuals and societies.



### Interdisciplinary Courses

*Current Issues in Science & Social Science*  
1 Semester Course



Consider pressing issues such as climate change, aging, public health, and electoral politics. Taught by faculty with a wide range of scientific and social-scientific expertise, these courses will challenge you to put the skills you have developed in the Common Curriculum and your major to work in exploring real-world problems.

*Historical Immersion*  
1 Semester Course

Study in depth a particular time and place different from your own. Bring your learning from the



Common Curriculum to bear on a detailed case study, which might include a historical event, such as the Lisbon earthquake of 1755 or the Indian Mutiny of 1857. Or you might choose a great work of literature, art, or music to analyze in its historical context.

### Sample Topics of Elective Courses

Atmosphere, Ocean, and Environmental Change

Computers, Networks, and Society

Environmental Economics

Ethics and Moral Reasoning

Fractal Geometry

Galaxies and Cosmology

Game Theory

History of Music

International Organizations

International Relations

Introductory Psychology

Modern Art

Perspectives on Global Health

Political Philosophy

Survey of Theater and Drama

Tropical Biodiversity

Visual Literacy

### Joint Degrees

#### Double Degree with Law through NUS

International legal work, for which Singapore is a hub, increasingly involves issues with transnational dimensions relating to commercial, environmental, and corporate and financial services law. The Double Degree Program in Law is a highly selective five-year program offered jointly by Yale-NUS College and the NUS Faculty of Law that is designed for today's complex, global legal environment.

#### Concurrent Degree with Environmental Studies at Yale

This five-year program gives Yale-NUS students the opportunity to earn a Master of Environmental Management degree from Yale's top-ranked School of Forestry & Environmental Studies. As part of their experience, Yale-NUS students will spend a semester during their third year taking classes at Yale with Yale students and faculty and will spend their fifth year of study at Yale as well.





*“By purposefully bringing together the new and the old, east and west, the sciences and the humanities, tradition and innovation – Yale-NUS will give you the preparation needed for the world of tomorrow’s graduates.”*

**Charles Bailyn** Inaugural Dean of Faculty, Yale-NUS College; Professor of Astronomy and Physics, Yale University



*“The energy exchange in discussion-based classes that Yale-NUS will have is incredible – discussion between students and between students and faculty. You leave a two-hour class feeling more energized and excited about your subject than when you came into the class – your head buzzing with new ideas. Such environments are truly inspiring for both faculty and students.”*

**Ananthi Al Ramiah** Assistant Professor of Social Sciences, Yale-NUS College



*“It is rare to have a chance to grow something so radically new in a university system as the Yale-NUS College. For a long time, a humanities model of education united Western Europe. The American liberal arts model grew from a European origin. Asian systems of education evolved their own versions of a complete educational experience. Singapore is ideally located in space, time, and in terms of its own logic of development to synthesize these systems into a robust hybrid.”*

**Rajeev S. Patke** Professor and Division Director of the Humanities, Yale-NUS College



*“For a long time now, there has been a tendency to think that increasing specialization is superior, but the ability to think across domains of knowledge, to make connections across different ideas, and to draw perspectives from multiple cultures will become more and more important. The particular attention the Yale-NUS curriculum pays to exposing students to the unique worldviews, histories, cultures, contexts, and perspectives of Asia and the West is especially exciting.”*

**Khoo Hoon Eng** Associate Professor of Biochemistry, Yong Loo Lin School of Medicine, NUS; Director of Academic Affairs, Yale-NUS College





From 18 Nobel Laureates to 5 U.S. Presidents and 5 Singapore Presidents and Prime Ministers; from Pulitzer Prize and Academy Award winners to scores of CEOs and entrepreneurs, Yale and NUS have been educating leaders for generations—leaders who have literally made history and shaped the future.

Here is a sample of our graduates—including thoughts from a few young alumni who have just started their careers. These graduates represent the kinds of paths and impact that we hope a Yale-NUS education will make possible for you.

➔ “This is the dream curriculum! I would have loved the opportunity to experience it myself,” says Liz, who grew up in Singapore and graduated from Raffles Junior College. “At Yale, I double majored in Political Science and East Asian Studies, having a keen interest in the discourse between Western and Asian civilizations. Lucky are those who get to enjoy this new curriculum through the liberal arts tradition. It will be the educational experience that grounds you meaningfully for work in this century. Yale-NUS sets a gold standard that other universities may well emulate in years to come.”

**Elizabeth Tan** Yale '06; Harvard MBA '11; Associate, Strategy and Business Development, Reed Elsevier



↑ “The NUS Overseas Colleges program, which will be offered to Yale-NUS students, was a life-changing experience that inspired the work we have developed in our start-up for the last five years, and will probably define my professional lifetime goals.”

**Darius Cheung** NUS '03; Cofounder and Former CEO, tenCube; Director, Consumer Mobile Technology, McAfee (tenCube was acquired by McAfee in 2010)

↑ “The NUS ecosystem is very entrepreneurial. Not only did I gain the knowledge required for starting my tech company, but I also met like-minded people to do it with.”

**Rishi Kumar** NUS '03; Cofounder and Chief Operating Officer, Zimplistic Inventions; Cofounder and Former Chief Technology Officer, tenCube; Former Director, Consumer Mobile Technology, McAfee

Where Will a Yale-NUS Education Take You? Anywhere You Want.



↑ “The extraordinary array of opportunities that Yale offered became the foundation for my career as founder and chief executive officer of Unite For Sight, a global health nonprofit organization that I started eleven years ago in my room in my Residential College at Yale.”

**Jennifer Staple-Clark** Yale '03; Founder and CEO, Unite For Sight, which has provided eye-care services to more than 1.3 million people worldwide

## What Employers Say About Yale-NUS College

“Yale-NUS will attract some of the best and brightest from across the region and beyond, and this is a talent pool we will no doubt need to tap into actively to continue to fuel our growth ambitions at Bain & Company.”

**Louis Lim** Partner, Bain & Company, Southeast Asia

“When I look at the Yale-NUS student experience, I see the coming together of a lot of things that are important when I look for people to hire. The ability to be mentally agile and move from one thing to another is going to be very important for what is coming ahead in the next 20 years.”

**Aliza Knox** Managing Director, Google, Commerce Asia Pacific

“Yale-NUS College is a start-up, and start-ups engage with people in a different way. If you want to sit back and just be taught, there are a hundred other universities for you to choose from. But if you want to be part of shaping something then this is a perfectly unique opportunity.”

**Rob Bier** Executive Coach and investing in and nurturing start-up companies Spent 12 years with Monitor Group

“What are human resource leaders looking for in terms of expertise? Can a person adapt? Do they have learning agility? Can they think creatively and “out of the box”? How do you influence and create an impact? Yale-NUS’s liberal arts program is a great opportunity to prepare students with these abilities.”

**Carolyn Chan** Managing Partner, Human Resources Officer Practice, Asia Pacific Heidrick & Struggles



As a Yale-NUS student you will be surrounded by opportunities—intellectual, entrepreneurial, artistic, international, professional, and interpersonal—that can launch you toward both long-term ambitions and unforeseen achievements.

We are interested in students who want to create real impact and positive change in the world—leadership at its best.

If the unique and powerful education offered at Yale-NUS appeals to you, if you are ready to embrace this opportunity, then accept our invitation to apply.

And if you want to learn more—or if your parents, counselors, teachers, and friends want to learn more—please do not hesitate to contact us. We look forward to getting to know you.

[www.yale-nus.edu.sg](http://www.yale-nus.edu.sg)

# Next Steps

## Apply

### The first class of students

The first class of students will enroll at Yale-NUS College in July of 2013. Yale-NUS College welcomes applicants from all backgrounds and all corners of the world. The College's admissions office operates in ways consistent with the non-discrimination policies of Yale and NUS.

### The admissions process

The College will use a broad, comprehensive approach to the evaluation of applicants. Academic achievement as reflected in test scores and grades will be a primary consideration, but interviews, recommendations, essays, and extracurricular accomplishments will also be



given significant weight in the process.

Every application will be reviewed, and the strongest will be given a detailed assessment by multiple readers. A group of senior admissions staff and other members of the College leadership team will render the final decision. Yale-NUS will admit all students on the basis of academic and personal qualities, without regard to their ability to pay.

### The cost of Yale-NUS

Yale-NUS gives its students access to a remarkable and affordable education, comprising numerous opportunities for global study and internships, culminating in an exceptional value for our students when compared to leading colleges abroad.

Yale-NUS will have a strong financial aid program. Merit scholarships will be awarded to recognize the exceptional qualities of the best students in the College. Need-based aid will help to ensure that Yale-NUS is accessible to talented students from the widest possible backgrounds.

### Tuition and Residential Fees

The tuition fees per year for Yale-NUS' first intake in 2013 are as follows:

#### Singapore Citizens

S\$15,000

#### Singapore Permanent Residents

S\$21,000

#### International Students

S\$30,000

All students will live on campus in one of our three distinctive

Residential Colleges. The fees for this immersive living and learning experience are \$7,060 per year. This includes a single room in a 6-bedroom suite and 21 meals a week in the Yale-NUS dining hall facility.

These fees will be cohort-based and be fixed for each cohort from year of admission until graduation four years later. National Servicemen in Singapore will pay the tuition fees relevant to the year they accept Yale-NUS' offer of admission.

## Learn More

To be part of our mailing list and receive all of the latest news and updates about this groundbreaking venture, visit

[www.yale-nus.edu.sg/index.php/enquiry](http://www.yale-nus.edu.sg/index.php/enquiry)

To attend one of several admissions events or Open Houses planned for 2012, visit [www.yale-nus.edu.sg/index.php/events.html](http://www.yale-nus.edu.sg/index.php/events.html)

For detailed information about admissions and financial aid, visit [www.yale-nus.edu.sg/apply.html](http://www.yale-nus.edu.sg/apply.html) for more on:

- > What really matters in an application to Yale-NUS College
- > A full listing of what you need to submit to be considered a candidate for admission
- > Applying to the double degree with NUS Faculty of Law and the concurrent degree with Environmental Studies at Yale
- > Getting answers to your questions about application deadlines, materials, and strategies

## Other Questions?

[admissions@yale-nus.edu.sg](mailto:admissions@yale-nus.edu.sg)

[www.yale-nus.edu.sg](http://www.yale-nus.edu.sg)

[www.facebook.com/yalenuscollege](https://www.facebook.com/yalenuscollege)

+65 6601 2416

	Round 1	Round 2	Round 3
<b>Application Deadline</b>	1 Nov 2012	15 Jan 2013	15 Apr 2013
<b>Decision Notification</b>	15 Dec 2012	31 Mar 2013	15 May 2013
<b>Reply Date</b>	1 May 2013	1 May 2013	1 June 2013



**Yale-NUS College**  
**National University of Singapore**  
**21 Lower Kent Ridge Road, UHL #03-01**  
**Singapore 119077**  
**[www.yale-nus.edu.sg](http://www.yale-nus.edu.sg)**

Photo credits: Dounia Bredes, YC'11; iStock.com; Lisa Kereszi; Edwin Koo; Michael Marsland; PKU-Yale Joint Undergraduate Program; Courtney Randolph, YC'14; Singapore Tourism Board; Hamish Smyth; Rachel Wang, YC'12; Yale School of Architecture; Yale Summer Session, 2009.

